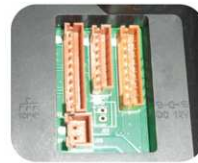
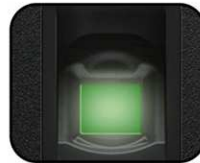




IN01-A

Multi-media Fingerprint Time Attendance and Access Control Terminal



Introduction

IN01-A is an innovative biometric fingerprint reader for time attendance and access control applications. Built-in 2000 mAh backup battery can eliminate the trouble of power-failure. Support optional GPRS and Wi-Fi. The IN01-A features the fastest commercial-based fingerprint matching algorithm and ZK high-performance, high-image quality optical fingerprint sensor. The 3" TFT can display more information vividly, including fingerprint image quality and verification result etc. TCP/IP communication is standard and make sure the data transmission between terminal and PC can be easily done within several seconds.

Features:

- * Color TFT screen with GUI Interface for ease of use
- * ZK Optical Sensor
- * 1 touch a-second user recognition
- * Reads Fingerprint and/or PINs
- * Optional integrated proximity or smart card reader
- * Built-in Serial and Ethernet ports
- * Multi Language Support
- * Built-in battery backup provides approx 4 hours continuous operation
- * Optional built-in wireless Wi-Fi or GPRS for wireless communication
- * Real-time 1-touch data export 3rd party hosted & non-hosted applications
- * SDK available for OEM customers and software developers

Configuration:



Specifications:

Fingerprint Capacity	3000 templates
Transaction Capacity	100,000
Hardware Platform	ZEM510
Sensor	ZK Optical Sensor
Algorithm Version	ZK Finger v10.0 and v9.0, default v10.0
Communication	RS232/485, TCP/IP, USB-Client, USB-Host
Access Control Interface for	electric lock, door sensor, exit button, alarm, door bell.
Wiegand signal	Input & Output
Standard Functions	Work code, SMS, DLST, Self-Service Query, Automatic Status Switch, Back-up battery, anti-pass back
Optional Functions.	ID/Mifare/HID, Extensible barcode, Relay-bell, Scheduled-bell, Web-server, SOAP, 9 digit user ID, Wi-Fi, GPRS
Display	3 inches TFT Screen
Power Supply	12V DC 3A
Operating Temperature	0 °C - 45 °C
Operating Humidity	20% - 80%
Dimension(W×H×D)	210×157×50 mm